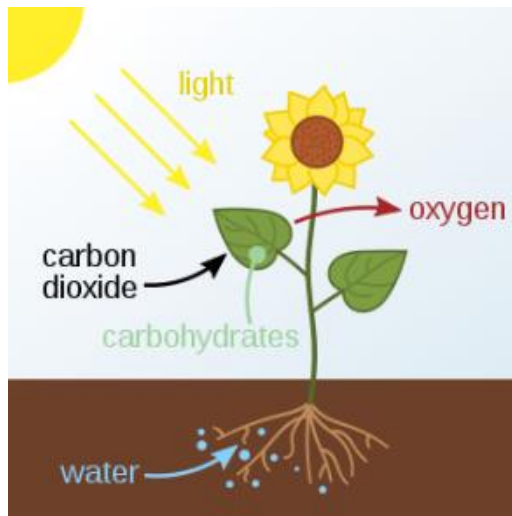


# What's going on here?

## What does a plant need to grow?



## What might I see in the UK and other countries?

- 👉 **Beaches** – Land usually covered in sand, separating buildings and the sea
- 👉 **Cliffs** – Steep rocks on edge of the ocean
- 👉 **Forests** – A large area covered in trees
- 👉 **Hills** – A raised area of land
- 👉 **Mountains** – Large, steep hills
- 👉 **Oceans** – An area of water
- 👉 **Rivers** – A flowing bit of water, which will eventually run to the ocean

## Types of trees

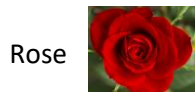
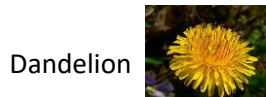


Evergreen



Deciduous

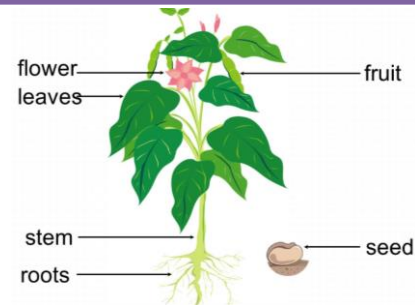
## Common wild and garden plants



## Key Vocabulary

Oxygen	A gas that is in the air – it is exhaled by plants
Carbon dioxide	A gas that is in the air – it is inhaled by plants
Deciduous	A tree that sheds its leaves every year
Evergreen	A tree that retains green leaves all year round
Plant	A living organism that grows

## Parts of a plant



## The Seasons and the associated weather



Spring



Summer



Autumn



Winter